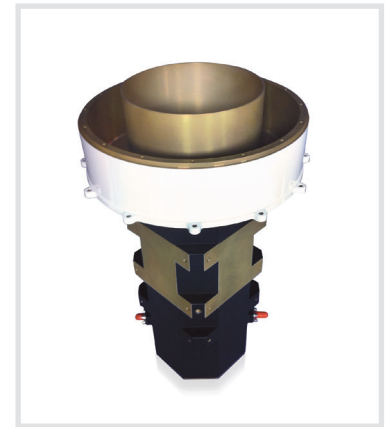


// Dual Circular Polarized Reflector Feed



SOLUTION FOR

- Reflector feed for ground station transmitter
- Simultaneous TX/RX in dual circular polarization

// Main features

Technical performance

- Dual circular polarization (LHCP/RHCP)
- Constant gain over frequency
- Smooth radiation pattern with low sidelobes

Design

- Low blockage for onset reflectors
- Circular corrugated radiating section
- Integrated septum polarizer
- Resists harsh environmental conditions

Surface treatment

- Alodine 1200 according to MIL-C 5541E class 3
- White polyurethane paint

Repeatability

- Stiff and robust mechanical design
- Precision pins for accurate polarization alignment
- Precision machined
- High reliability coaxial connectors

Delivered documents

- Typical performance data (TYMEDA™)
- Measured return loss data and port-to-port coupling

// Product configuration

Equipment

- Integrated thermal housing with radome

Related services

- Calibration and maintenance
- Customization

■ Included Optional

Electrical characteristics

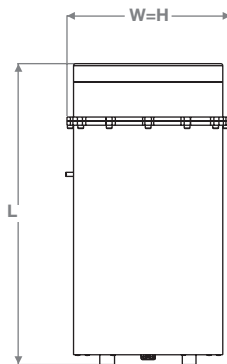
Part number	DCF200
Type of antenna	Corrugated feed horn
Frequency range	2 – 2.5 GHz
Polarization	Dual circular
Gain	9 dBi
VSWR	< 1.2
Return loss	< -20 dB
Cross polar discrimination	20 – 30 dB
Impedance	50 Ohms
Power handling (CW)	150 W

Mechanical characteristics

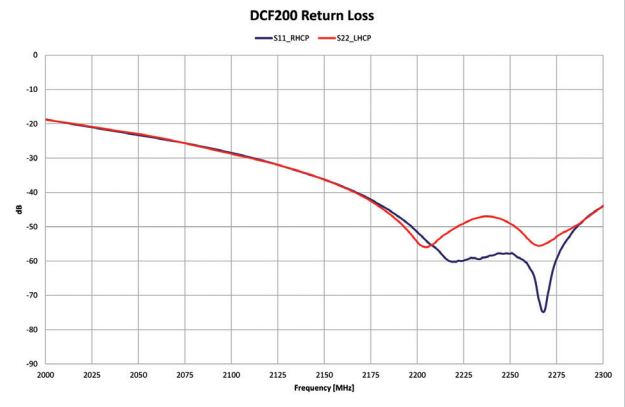
Part number	DCF200
Dimensions	
W=H	200 mm
L	360 mm
Weight (approx.)	3.6 Kg
RF connectors	N-type Female
Materials	Aluminum, PTFE
Treatment	Alodine 12001
Color	White
Mounting interface	Collar mounting
Wind rating	> 20 m/s
Operating temperature	-45° C - +50° C

(1) Equivalent to MIL-C 5541 E class 3

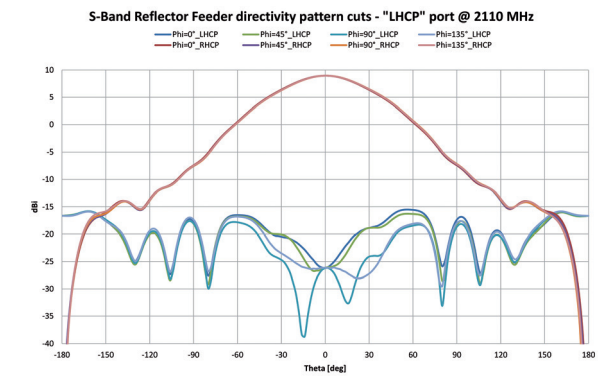
Dimensional drawing



Return loss



Radiation pattern @ 2110 MHz (LHCP)



Radiation pattern @ 2110 MHz (RHCP)

